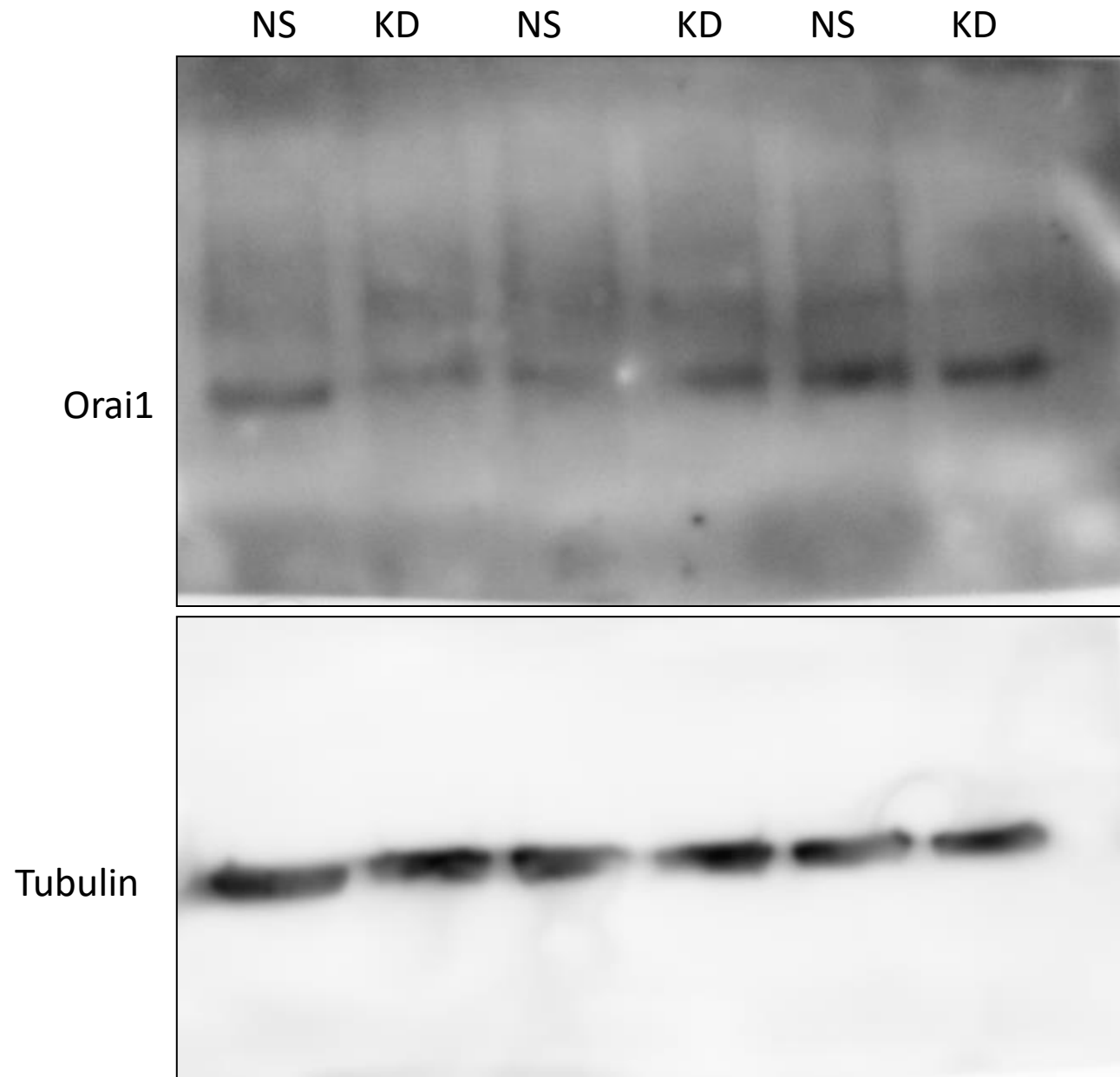


NS- Control shRNA (shRNA NS), KD- IP<sub>3</sub>R1 shRNA

In 1<sup>st</sup> and 3<sup>rd</sup> blot I had to use different exposure time for STIM1 and Tubulin



NS- Control shRNA (shRNA NS), KD-IP<sub>3</sub>R1 shRNA, Each NS or KD indicates each biological replicates.